

LOT 9

Main Floor: 1,332 sq ft

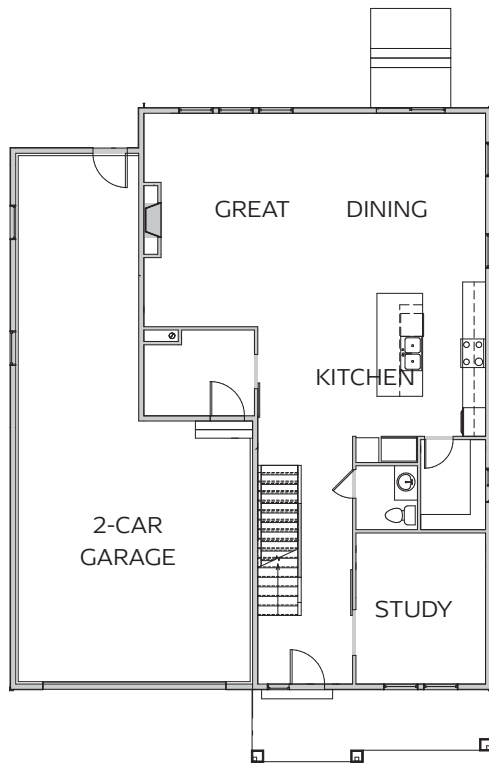
Upper Floor: 1,733 sq ft

Unfinished Basement: 1,336 sq ft

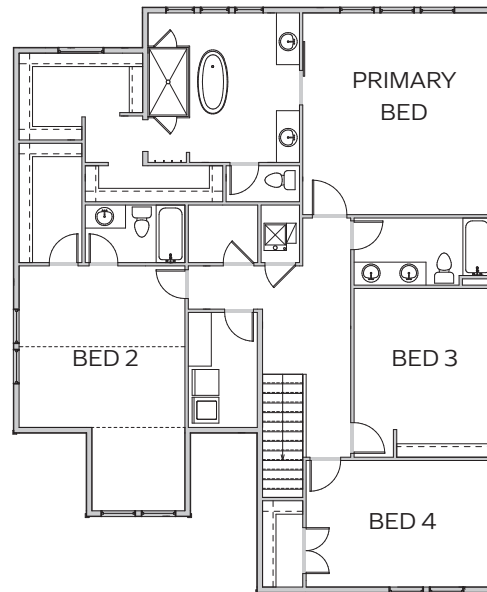
Total: 4,401 sq ft



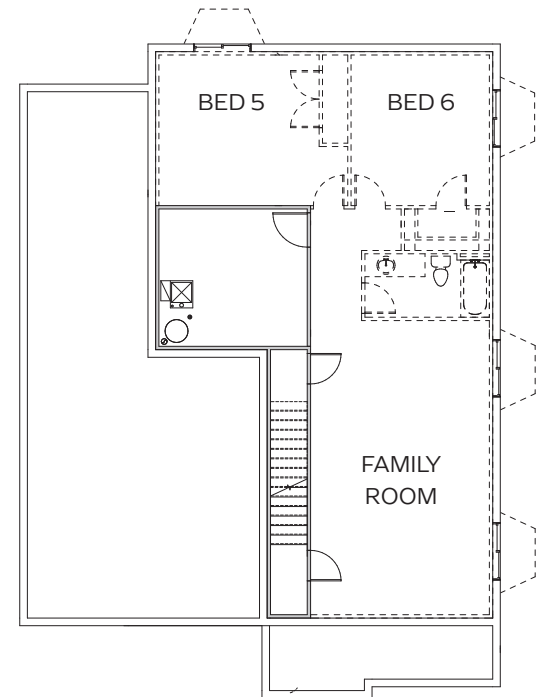
CASTLEWOOD



MAIN FLOOR



UPPER FLOOR



BASEMENT

LOT 9

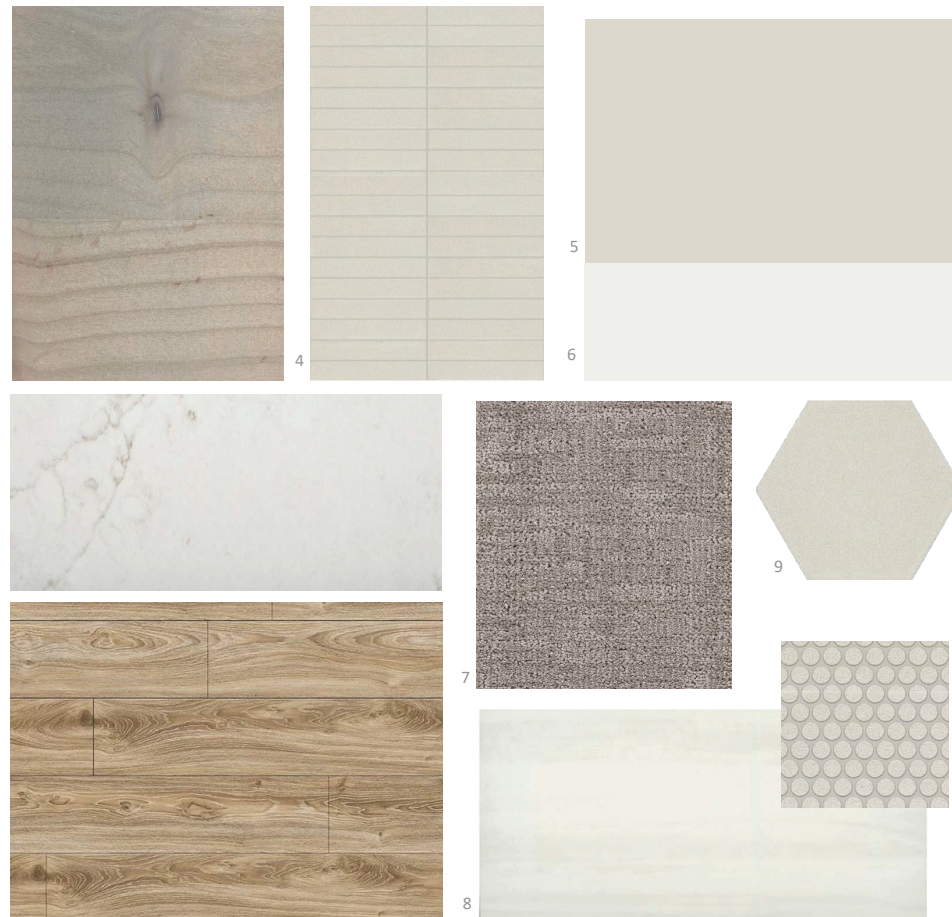


Upgraded Features

- Man Door from garage
- Additional can lighting package
- Under cabinet lighting
- 42" Cosmo fireplace insert w/blower
- Stone fireplace with wood mantle
- Rim and joist spray foam perimeter insulation
- Tankless water heater
- Upgraded appliance package including 36" LG
- Signature gas range, micro/oven combo and dishwasher
- Finished garage with paint and texture
- Three-tone paint
- Tile showers and floors
- Euro enclosure in primary suite
- Shower niche in bathrooms
- Freestanding tub in primary suite
- Black door and cabinet hardware
- Black plumbing fixtures
- Black lighting fixtures
- Stain grade custom cabinets throughout
- Quartz countertops in kitchen, baths and laundry
- LVP flooring throughout main floor

for more information, please call Lance and Amy May

(801) 243-2567



Finishes and Fixtures

1. Cabinets
2. Countertops
3. LVP
4. Kitchen Backsplash
5. Wall Paint Color
6. Trim Paint Color
7. Carpet
8. Shower Surround Tile & Floor Tile
9. Bathroom Floor Tile
10. Door hardware and bathroom sink fixture



Exclusively Marketed By

