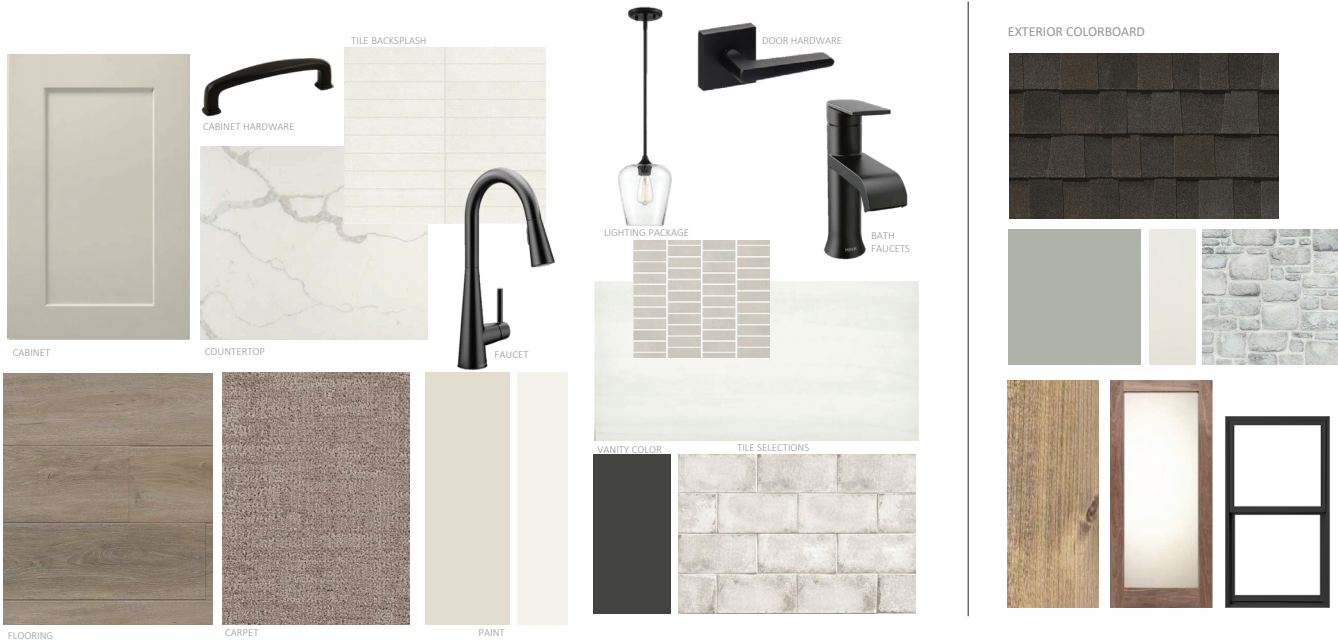


# LOT 2



## UPGRADED FEATURES

- Man door to garage
- Upgraded lighting package: additional can lights and under cabinet lighting
- Fireplace with floor to ceiling shiplap and stain grade mantle
- Gas line to BBQ
- Rim and joist 1" spray foam insulation
- Hose bib in 3rd stall garage
- Insulated "wood look" garage door
- Upgraded appliance package
  - 36" LG Signature gas range
  - Micro/oven combo unit
  - Dishwasher
- Garage finished with texture and paint
- Upgraded tile in bathrooms
- Black door hardware
- Black bathroom hardware and plumbing fixtures
- Laundry room with sink
- Kitchen cabinets with modern range hood, uppers to the ceiling, tray slots and garbage drawer
- Extra-large kitchen island w/ wing walls
- LVP flooring on entire main floor excluding primary bed and bath



for more information, please call Lance and Amy May

**(801) 243-2567**

Exclusively Marketed By



# LOT 2



CASTLEWOOD

## Pinewood

main floor - 1,761 sq.ft.

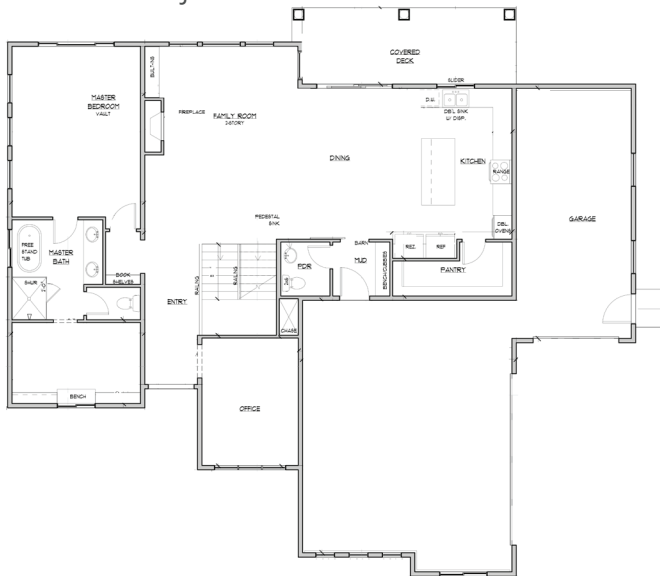
upper floor - 1,009 sq.ft.

basement - 1,641 sq.ft. (unfinished)

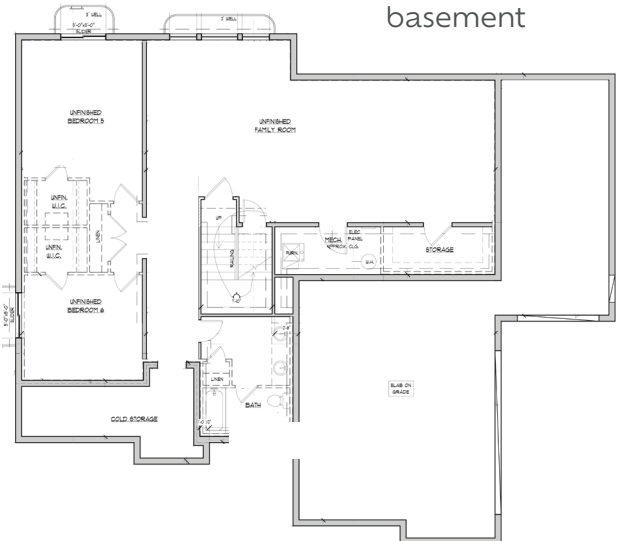
total - 4,411 sq.ft.



main floor



basement



upper floor



©2023 BHH Affiliates, LLC. An independently owned and operated franchisee of BHH Affiliates, LLC. Berkshire Hathaway HomeServices and the Berkshire Hathaway HomeServices symbol are registered service marks of Columbia Insurance Company, a Berkshire Hathaway affiliate. Equal Housing Opportunity. Information not verified or guaranteed.

