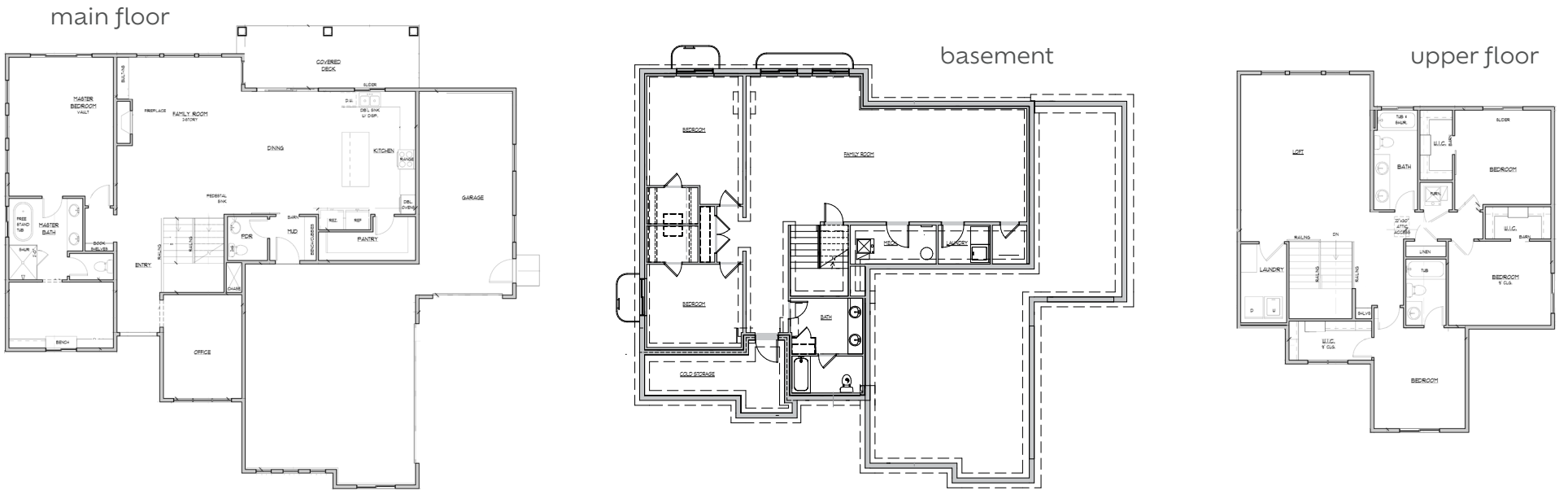




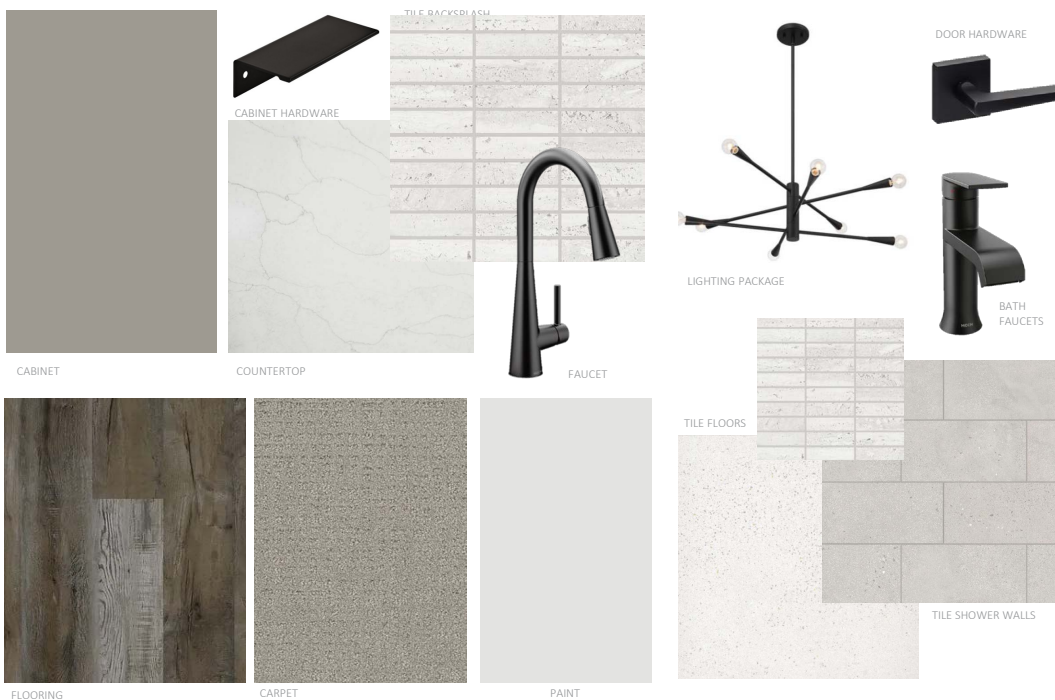
PINEWOOD

6 bedroom, 4.5 bathroom
 3 laundry rooms, 3 family rooms
 main floor - 1,761 sq.ft.
 upper floor - 1,296 sq.ft.
 basement - 1,790 sq.ft.
 total - 4,847 sq.ft.



UPGRADED FEATURES

- Finished basement
- Man door to garage
- Upgraded lighting package: additional can lights and under cabinet lighting
- Stone fireplace with built-ins
- Gas line to BBQ
- Rim and joist 1" spray foam insulation
- Insulated garage door
- Garage finished with texture and paint
- Tankless water heater
- Hose bib in 3rd stall garage
- Upgraded appliance package
 - 36" LG Signature gas range
 - Micro/oven combo unit
 - Dishwasher
- Upgraded tile in bathrooms
- Black door hardware
- Black bathroom hardware and plumbing fixtures
- Accent walls
- Laundry room with sink
- Kitchen cabinets with modern range hood, uppers to the ceiling, tray slots and garbage drawer
- Extra-large kitchen island with storage
- LVP flooring on entire main floor excluding primary bed and bath
- RV pad 26' deep



for more information,
 please call Lance and Amy May

(801) 243-2567



EXTERIOR COLORBOARD

